

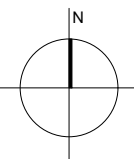


SITE LAYOUT PLAN
1:1000 @ A1

GENERAL NOTES:
DRAWING TO BE READ WITH REFERENCE TO THE FOLLOWING ASSOCIATED DRAWINGS AND INFORMATION:
- 0000 SERIES DRAWINGS: EXISTING SITE INFO
- 1000 SERIES DRAWINGS: PROPOSED SITE LAYOUT INFO
- 2000 SERIES DRAWINGS: PROPOSED ELEVATIONS INFO
- 3000 SERIES DRAWINGS: PROPOSED SITE LONGITUDINAL SECTIONS
- 4000 SERIES DRAWINGS: GA DRAWINGS/UNIT TYPES INFO
- 5000 SERIES DRAWINGS: PROPOSED MATERIALITY
- 6000 SERIES DRAWINGS: HDA AND ASSOCIATED SCHEDULE OF INFO
- ARCHITECTURAL DESIGN STATEMENT

SITE BOUNDARY:
SITE AREA: 116,750.34 M² / 11.68 HECTARES
NET DEVELOPABLE AREA: 106,705.55 M² / 10.67 HECTARES
(NOTE SOUTH LINK STREET EXCLUDED)

BASED ON:
TOPOGRAPHICAL SURVEY RECEIVED FROM
PCA LTD - 19/09/2024



| REVISION | DATE | NOTES | REVISION | DATE | NOTES |
|----------|------|-------|----------|------|-------|
| A | | | G | | |
| B | | | H | | |
| C | | | I | | |
| D | | | J | | |
| E | | | | | |

| REVISION | DATE | NOTES |
|----------|------|-------|
| F | | |
| G | | |
| H | | |
| I | | |
| J | | |

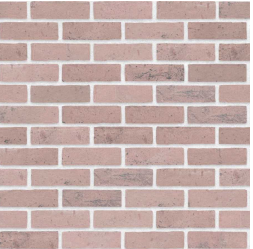
DRG NO: KSG4 DTA ZZ ZZ DR A 5000
PROJECT: KISHOGE PART 10 APPLICATION
DRAWING: SITE 4 - MATERIALITY

| | |
|----------|---------------------------|
| SCALE: | 1:1000 @ A1 / 1:2000 @ A3 |
| JOB NO: | 2301-KSG2 |
| SERIES: | PLANNING APPLICATION |
| DATE: | 28/03/2025 |
| DRAWN: | CF |
| CHECKED: | JM |

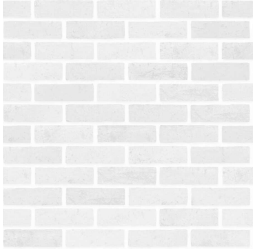
DTA ARCHITECTS
ARCHITECTURE & URBAN DESIGN
12-14 COLLEGE GREEN, DUBLIN 2
T: 353 (0) 1 6777742
WWW.DTA.IE

MATERIALITY

BRICK - WHITE MORTAR



LIGHT RED

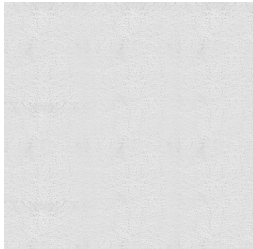


WHITE/LIGHT GREY

RENDER



RED/TERRACOTTA

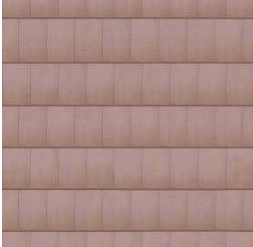


WHITE/LIGHT GREY

ROOF - CLAY TILES



DARK GREY



RED/TERRACOTTA

GENERAL NOTES

GREEN ROOF APPLIED TO ALL FLAT ROOFS OF ALL APARTMENT BLOCKS (Ap Block H, J, F, Age-Friendly and Garden Apartments)

ALL BOUNDARY WALLS TO RECEIVE LIGHT RED BRICKS MATERIAL FINISH

ALL WINDOW FRAMES AND METALWORKS TO RECEIVE DARK GREY COLOR MATCHING FINISH (Refer to Image 02)

HARDWOOD TIMBER TO DOOR PANELS AND COVERS OF ALL BINS & BIKES STORES, AND TO ACCESS GATES TO BACK GARDENS

REFER TO SHEETS 5001 TO 5008 FOR TYPICAL HOUSES & APARTMENTS MATERIALITY DRAWINGS

REFER TO SHEETS 5009&5010 FOR BICYCLES & BINS MATERIALITY DRAWINGS

PALETTE 1
RED BRICKS

PALETTE 2
RED BRICKS UP TO LEVEL 02
RED RENDER UPPER FLOORS
(Refer to View 01)

PALETTE 3
RED BRICKS AT GROUND FLOOR
RED RENDER UPPER FLOORS

PALETTE 4
RED BRICKS AT GROUND FLOOR (Up to 1F Window Sill)
WHITE RENDER UPPER FLOORS
(Refer to View 03)

PALETTE 5
RED BRICKS AT GROUND FLOOR (Up to 2.4M)
WHITE RENDER UPPER FLOORS

PALETTE 6
WHITE BRICKS

PALETTE 7
WHITE BRICKS AT GROUND FLOOR (Up to 2.4m)
WHITE RENDER AT UPPER FLOORS

PALETTE 8
WHITE BRICKS AT GROUND FLOOR
WHITE RENDER UPPER FLOORS

PALETTE 9
RED RENDER

PALETTE 10
RED BRICKS AT GROUND FLOOR
WHITE BRICKS AT UPPER FLOORS
(Refer to View 05)

PALETTE 11
WHITE BRICKS AT GROUND FLOOR (Up to 1F Window Sill)
WHITE RENDER AT UPPER FLOORS

PALETTE 12
RED BRICKS AT GROUND FLOOR
WHITE RENDER AT UPPER FLOORS

PALETTE 13
RED BRICKS AT GROUND & FIRST FLOOR
WHITE RENDER AT UPPER FLOORS
(Refer to View 04)

PALETTE 14
BLACK METAL & GLAZING SYSTEM PANELLING
(Refer to View 02)



CGI View 09 - Apartment Block J & Duplex Type D2



CGI View 08 - Apartment Block F - Retail & Childcare Facility at Ground Floor



CGI View 14 - House Type H1, Duplexes Type D1& D2 in the Background



CGI View 02 - Triplex Type T1 & House Type H1



CGI View 13 - House Type H2 & Triplex T4